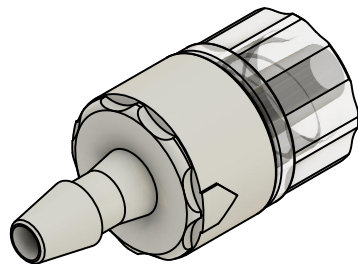
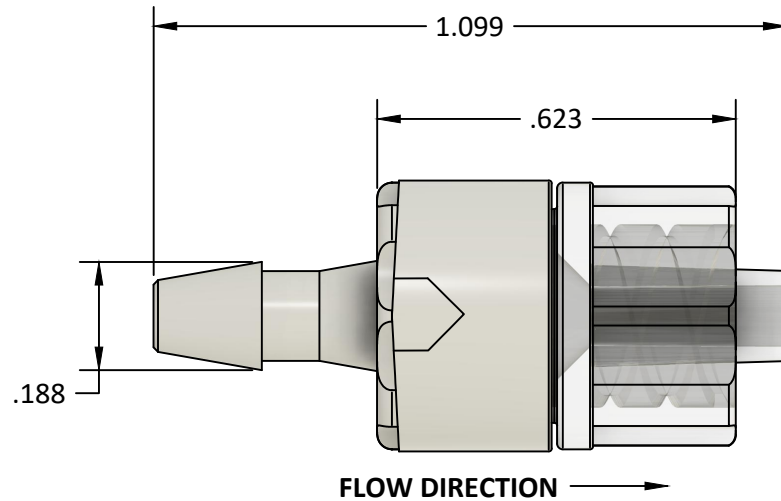



Notes:

1. Housing materials: ABS
2. Filter materials: HDPE, PS
3. 80369-7



REFERENCE ONLY

Technical Property*	Parameter*
Hydrophobicity of filter:	140 cm H ₂ O
Filter efficiency for 0.2µm particle size:	approximately 99.99825 % (according to EN 1822-3)
Sterilization compatibility:	ETO-Gas, γ-irradiation up to 50 kGy (Cumulative)
¹ for an infusion set according to ISO 8536-4 with embedded air valve (Δp = 1 mH ₂ O)	
Remarks: * Products are intended for single use. Multiple uses may affect technical properties adversely. * Specifications are for non-sterile products. * Specifications are provided for reference only. Injectech makes no guarantee of the above specifications and recommends that customers validate the suitability of products within their specific application	

			
TITLE Filter, 1/8" Barb to Male Luer Lock			
SIZE A	DWG NO F70418		REV
DRAWN	CH	DATE	5/27/2021
SCALE:	NTS	SHEET 1/1	