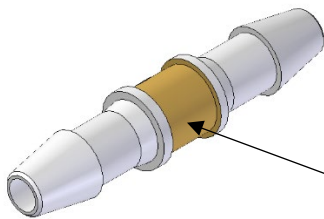


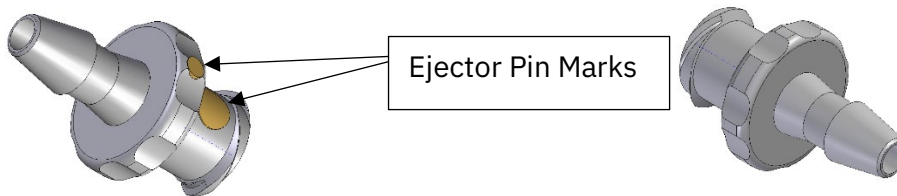
## Injectech Statement concerning “Fit, Form, and Function”.

**Fit:** the ability of a part to physically interface with, connect to, or become an integral part of another part. Injectech defines its standard product connector line as the “fit” to a mating connector and or tubing. Exclusions may be considered perpendicular to intended “fit”. Customer specific “fit” requirements for products/connectors may be defined by end user with the creation of a unique part number.



Example: If a customer requires the part diameter to be controlled because the end use requires the fitting to snap into a housing. This would require a new assigned part number.

**Form:** the shape, size, dimensions, mass, weight and other visual parameters that uniquely distinguish a part. Injectech considers “form” that applies directly to the function/performance of the connector/products intended use. Exclusions that may apply are variations in ejector pin marks that do not interfere with products intended use. Customers may request consideration with the creation of a custom part number.



**Function:** the action or actions that a part is designed to perform. Injectech products are initially designed to allow the transfer of media through the product or securing the product supporting media transfer. There are no exclusions from this definition as customers are required to test Injectech products in their specific applications.

**Notes:** any additional requirements specifying new part number assignments may be subject to a NRE (non-recurring engineering fee) and or a minimum order requirement. Please contact our sales department for any questions from the contact information below.