

Respiratory Parts

ISO 80369-2



Injectech

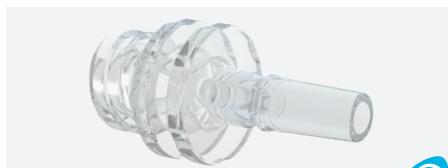
Trusted Biomedical Components

injectech.net



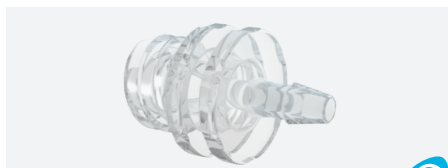
80369-2 Male to Female Luer
Lock Adapter

06702
Clear Acrylic



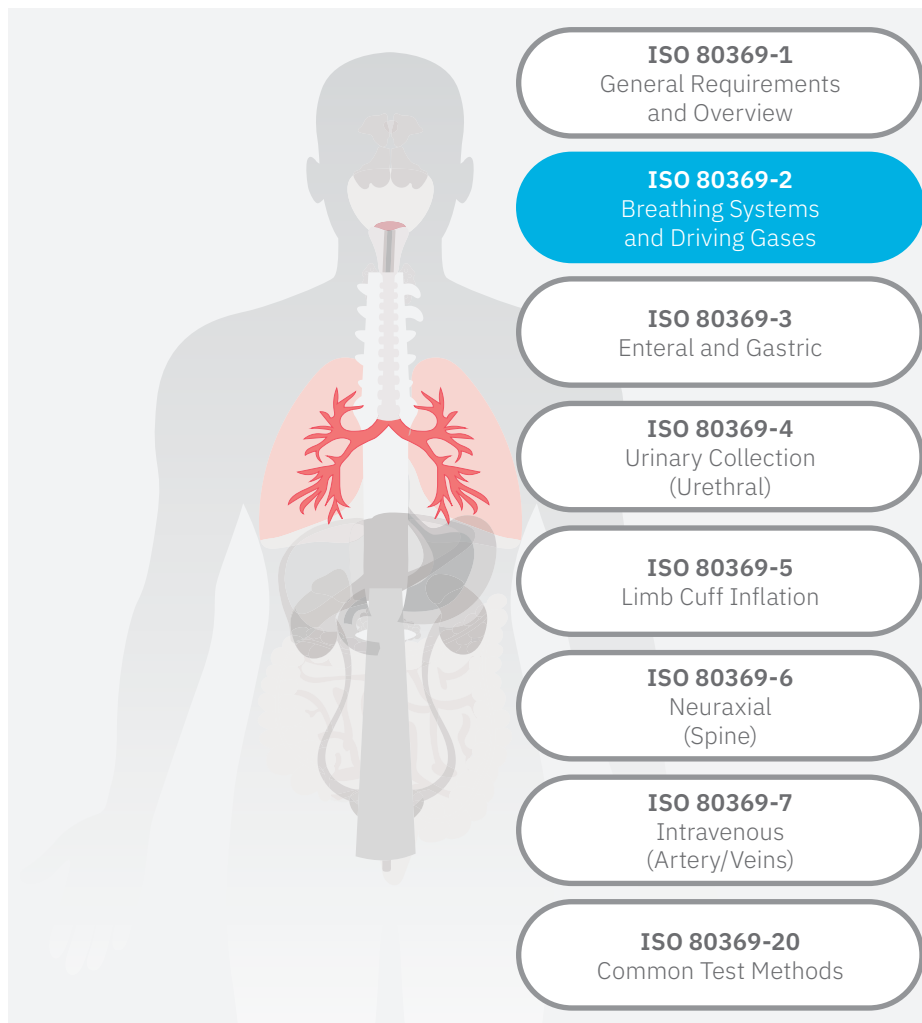
80369-2 Female to Rotating
Male Luer Adapter

0503R
Clear Acrylic



80369-2 Female to 3/32"
(2.5 mm) ID Tubing

05332
Clear Acrylic



New ISO Standard

In 2024, the International Standards Organization (ISO) approved a standard for respiratory connections to replace the luer connections previously used in this application. The new connection will be required in future respiratory medical devices.



The  icon designates a fitting is compliant to the ISO 80369-2 standard.

We Offer:

Defined connector replacing any luer connections

Connection for both female and male connectors

A range of molded parts to this new standard

Parts available in multiple barbed and bond-in sizes

Parts available in various plastic materials

Customizations compliant with this new respiratory standard

Luer to 80369-2 adapters to assist in the market conversion



80369 Parts

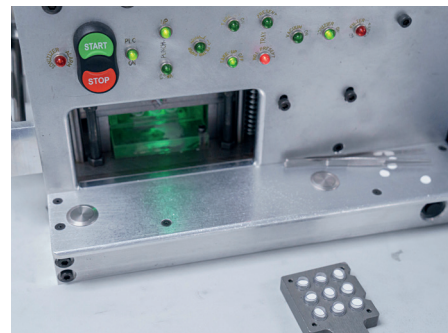
Injectech, LLC was founded as a custom molder and assembly enterprise.

Since then we have expanded our catalog offering to become a trusted partner for medical device OEMs, biomedical/pharmaceutical manufacturers, veterinary suppliers, and industrial businesses worldwide.

Injectech's flexibility, short lead times, and high-quality products offer a competitive advantage to our customers and partners. From design to delivery, Injectech is here to provide you with the products you need - when you need them.

Commitment to our Customers

Injectech manufactures a variety of 80369-7 products for intravascular applications and is proud to introduce our new line of 80369-2 (Patent pending) components for respiratory applications.



Custom Capabilities

Have an idea? We'll work with you to bring it to life! Injectech offers custom design and assembly services while maintaining trustworthy customer service to meet your project requirements.

Our custom design services include:

- Prototype machining and molding
- Design support and consulting
- Production molds
- Material sourcing



Injectech

307 N Link Lane | Fort Collins | CO 80524 | USA
sales@injectech.us
+1 970 482 0273

injectech.net

